

TC-64
12/ KIPPEN RD (CTY RD 12)
TO BE CLOSED
DATE (TO BE DETERMINED)

CONTRACTOR TO
 INSTALL TC-64 SIGNS
 WITH DATES AT LEAST
 ONE WEEK PRIOR TO
 CLOSING KIPPEN ROAD

TC-67
12/ KIPPEN RD (CTY RD 12)
CLOSED AT
MILL RD (CTY RD 3)
LOCAL TRAFFIC FOLLOW **D-7**
TRUCKS FOLLOW **D-1**

TC-67
12/ KIPPEN RD (CTY RD 12)
CLOSED
LLOYD EISLER STREET
TO MILL ROAD (CTY RD 3)
LOCAL TRAFFIC FOLLOW **D-8**
12/ SOUTH-TRUCKS FOLLOW **D-4**

TC-67
12/ KIPPEN RD (CTY RD 12)
CLOSED
LLOYD EISLER STREET
TO MILL ROAD (CTY RD 3)
3/ WEST-TRUCKS FOLLOW **D-2**
LOCAL TRAFFIC FOLLOW **D-8**
12/ SOUTH-TRUCKS FOLLOW **D-4**

TC-67
12/ KIPPEN RD (CTY RD 12)
CLOSED
LLOYD EISLER STREET
TO MILL ROAD (CTY RD 3)
3/ WEST-TRUCKS FOLLOW **D-2**
LOCAL TRAFFIC FOLLOW **D-8**

TC-67
12/ KIPPEN RD (CTY RD 12)
CLOSED
LLOYD EISLER STREET
TO MILL ROAD (CTY RD 3)
3/ WEST-TRUCKS FOLLOW **D-2**
LOCAL TRAFFIC FOLLOW **D-8**
12/ KIPPEN RD- TRUCKS FOLLOW **D-4**

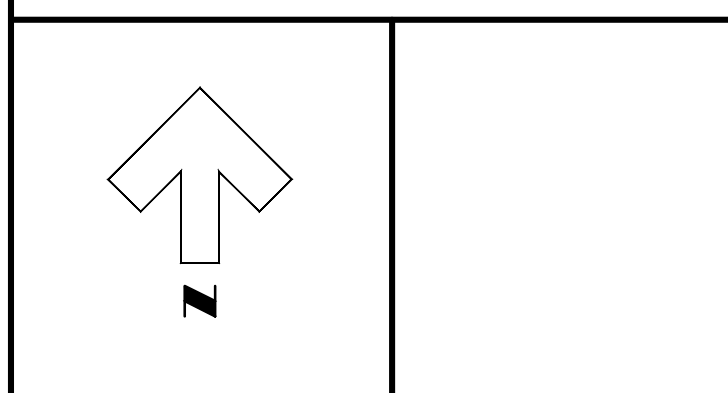
TC-67
12/ KIPPEN RD (CTY RD 12)
CLOSED AT
MILL RD (CTY RD 3)
LOCAL TRAFFIC FOLLOW **D-7**
TRUCKS FOLLOW **D-3**

- NOTES:
1. TRAFFIC CONTROL TO BE IN ACCORDANCE WITH THE ONTARIO TRAFFIC MANUAL-BOOK 7-TEMPORARY CONDITIONS (LATEST REVISION)
 2. IT IS THE SOLE RESPONSIBILITY OF THE CONTRACTOR TO DESIGN, INSTALL AND MAINTAIN THE REQUIRED TRAFFIC CONTROL SYSTEM. DETOUR ROUTE PLANS PROVIDE A BASIC ROUTE FOR THE DETOUR ONLY. ADDITIONAL SIGNAGE WILL BE REQUIRED BY THE CONTRACTOR TO COMPLY WITH OTM BOOK 7 REQUIREMENTS.
 3. LOCATION AND PLACEMENT OF TRAFFIC CONTROL SIGNS ON HIGHWAYS 4 AND 8 TO BE COORDINATED WITH THE MINISTRY OF TRANSPORTATION.
 4. LOCATION AND PLACEMENT OF TRAFFIC CONTROL SIGNS ON PERTH COUNTY ROADS TO BE COORDINATED WITH THE COUNTY OF PERTH.
 5. LOCATION AND PLACEMENT OF TRAFFIC CONTROL SIGNS ON HURON COUNTY ROADS TO BE COORDINATED WITH THE COUNTY OF HURON.
 6. LOCATION AND PLACEMENT OF TRAFFIC CONTROL SIGNS ON MUNICIPAL ROADS TO BE COORDINATED WITH THE APPLICABLE LOCAL MUNICIPALITY.

LEGEND

	WEST & NORTH TRUCK DETOUR (ROUTES D-1 AND D-2)
	SOUTH & EAST TRUCK DETOUR (ROUTES D-3 AND D-4)
	COUNTY BOUNDARY LINE
	SIGN POST
	DETOUR AHEAD 1 KM SIGN
	DETOUR AHEAD 2 KM SIGN
	DETOUR TURN OFF SIGN
	DETOUR DESIGNATION SIGN
	DETOUR MARKER - 90° RIGHT TURN APPROACHING
	DETOUR MARKER - 90° LEFT TURN APPROACHING
	DETOUR MARKER - 90° RIGHT TURN
	DETOUR MARKER - 90° LEFT TURN
	DETOUR MARKER - STRAIGHT AHEAD
	DETOUR MARKER - DETOUR ENDS
	STREET SECTION CLOSED SIGN
	MAXIMUM TONNES ADVISORY SIGN

1 : 50,000



Design By: R.R.R. Checked By: D.L.E.

No.	DATE	REVISION
1	Jan. 15, 2019	Public Information Centre Open House
2	Feb. 8, 2019	Issued for Tender
3	Mar. 11, 2019	Updated as per Ministry of Transportation comments
4	April 1, 2019	Updated sign at Road 180 and Hwy 8



Goderich Mount Forest Sarnia



Huron County and the Municipality of Huron East (Egmondville)
Kippen Road Reconstruction
 Truck Traffic Detour Routes

Contract No. HC 19-302	Project No. 18051
Scale 1 : 50,000	Drawing No. 17