



# BIRNAM

## Highway 8 Traffic Management Plan

Table of Contents

1. GENERAL .....  
1.1. Project Overview Phase II .....  
1.2. Objectives .....  
1.3.1 Works Sequence .....  
1.3.2 Truck Detour .....  
2. POTENTIAL IMPACTS .....  
2.1 General Impacts .....  
2.2 Emergency Services .....  
3. TRAFFIC MANAGEMENT STRATEGY .....  
3.1 Responsibilities .....  
3.1.1 Project Manager .....  
3.1.2 Superintendent .....  
3.1.3 Traffic Control Foreman .....  
4. INCIDENT MANGEMENT .....

Appendices

- Appendix 1 – General Traffic Control Plans  
Appendix 2 – Specific Traffic Control Plan Through Construction Zone  
Appendix 3 – Traffic Detour Plan



## 1.0 General

### 1.1 Project Overview

The Road Reconstruction of Highway 8 (Goderich Street) from Main Street to Centennial Drive, to facilitate new watermain, storm and sanitary sewer, and roadway installation.

### 1.2 Objectives

This document outlines **general requirements** for a Traffic Management Plan for the Highway 8 Road Reconstruction. 2021 objectives of the Traffic Management Plan are to:

- Ensure the safety of crews on the Project as well as the public.
- Minimize and mitigate damage and wear due to project-related construction traffic within the transportation system.
- Minimize inconvenience, delays, and detours, and maintain traffic mobility to every extent possible during Project construction.
- Ensure compliance with applicable legislation and effective cooperation with authorities having jurisdiction at the municipal and provincial level.

#### 1.3.1 Work Sequence

Work will commence late April/early May and will start with closing the road from Sta. 2+330 to 2+370, and to limit of construction on Coleman Street. Following the complete work required within those limits, the operation will be moved to the start of the job at Main Street, and the first block will be closed off with fence while the complete works are completed. Once the operation has reached Victoria Street, the fence will be moved to across Victoria Street to the east, to allow for all work in the intersection be completed. From Victoria to Coleman, work will be completed one lane at a time, using TL-21, to allow for one lane of traffic to flow and to maintain access to businesses. For the section of the project from Coleman to Centennial, the road will be completely closed, permitting local traffic only.

#### 1.3.2 Truck Detour

Trucks will be diverted around Seaforth during this construction project, by way of Hydro Line, Hensall Road, and Tile Road. A significant effort will be made not to conflict with the detour routes set up for the road reconstruction along Main Street. Birnam has chosen to use higher numbers for their detour to avoid this issue. The truck detour plan will also be submitted to Ontario 511, to ease with guiding the trucks around both projects.

## 2.0 Potential Impacts and Mitigations

### 2.1 General Impacts

Access to businesses is a key for the duration of this project. Most of businesses along this stretch have alternate access from side streets. The block of most concern is Chalk to Coleman, where access to Tim Hortons and Huron Road Dental will need to be maintained, since they have no other access. TL-21 will be used from Victoria to Coleman, to maintain one lane of traffic through. Another potential issue may arise while working on 1350 conc pipe on Coleman Street, where the intersection will have to be shut down completely. Diverting traffic from Coleman to Highway 8 east of Coleman Street could involve a lengthy detour. While working from Main to Victoria, Highway 8 will be completely closed to through traffic. Therefore, the detour will have to be well constructed and maintained for the duration of the closure.

## **2.2 Emergency services**

At all times Birnam will provide access to emergency services to incidents inside the construction limits. All emergency services will be notified of road closures prior to their use.

## **3.0 Traffic Management Strategy**

### **3.1 Responsibilities**

The TMP responsibilities are spread between 3 main persons who will implement and apply the plan on site. The Project manager is responsible for the liaison with the Engineer, Municipality and other tenure holders to achieve the objectives of this Plan. The superintendent is making sure that the plan is well applied and followed on site. The traffic control foreman will do the on-site logistics of signs and devices placement.

#### **3.1.1 Project Manager**

- Site is properly resourced with people, equipment, facilities, and systems.
- Ensures site complies with all requirements for Temporary Conditions as outlined in Book 7 of the Ministry of Transportation Ontario Traffic Manual and all conditions as outlined in Section GC7.0 "Contractor's Responsibilities and Control of the Work" of the General Conditions of the Contract.
- Site is properly planned, organized, directed, and controlled.
- Is achieving its objectives.
- Implementing the Traffic Management Plan and the Traffic Control Plan on site.
- Modify traffic flow using lane closures as approved by Engineer.
- Ensuring subcontractors/suppliers have suitable qualifications and experience.

#### **3.1.2 Superintendent**

- Traffic Control plan is set up and taken down in a safe and efficient manner throughout the project schedule.
- All temporary measures will be maintained in an effective condition while in use and removed when permanent.

- Back up of all gravel trucks and equipment will be done under the guidance of a spotter employed by Birnam Excavating Ltd and kept to a minimum.
- inspect the traffic control layout, recording any deficiencies and the action taken to rectify them.
- Ensuring everyone on site is trained and wears the appropriate approved clothing.
- Plan works during appropriate weather conditions and time of day, when feasible.
- Use traffic control persons when necessary as a mean to ensure safety of both road users and field crews.
- Monitor traffic to determine the effectiveness of traffic control measures and adjust as required.
- Plan and communicate to all workers appropriate access routes to site areas where emergency vehicles and response personnel may require passage.
- Traffic control persons are positioned in a safe location clear of potential traffic hazards.
- Ensure traffic control persons perform traffic control duties competently and safely.

### 3.1.3 Traffic Control Person

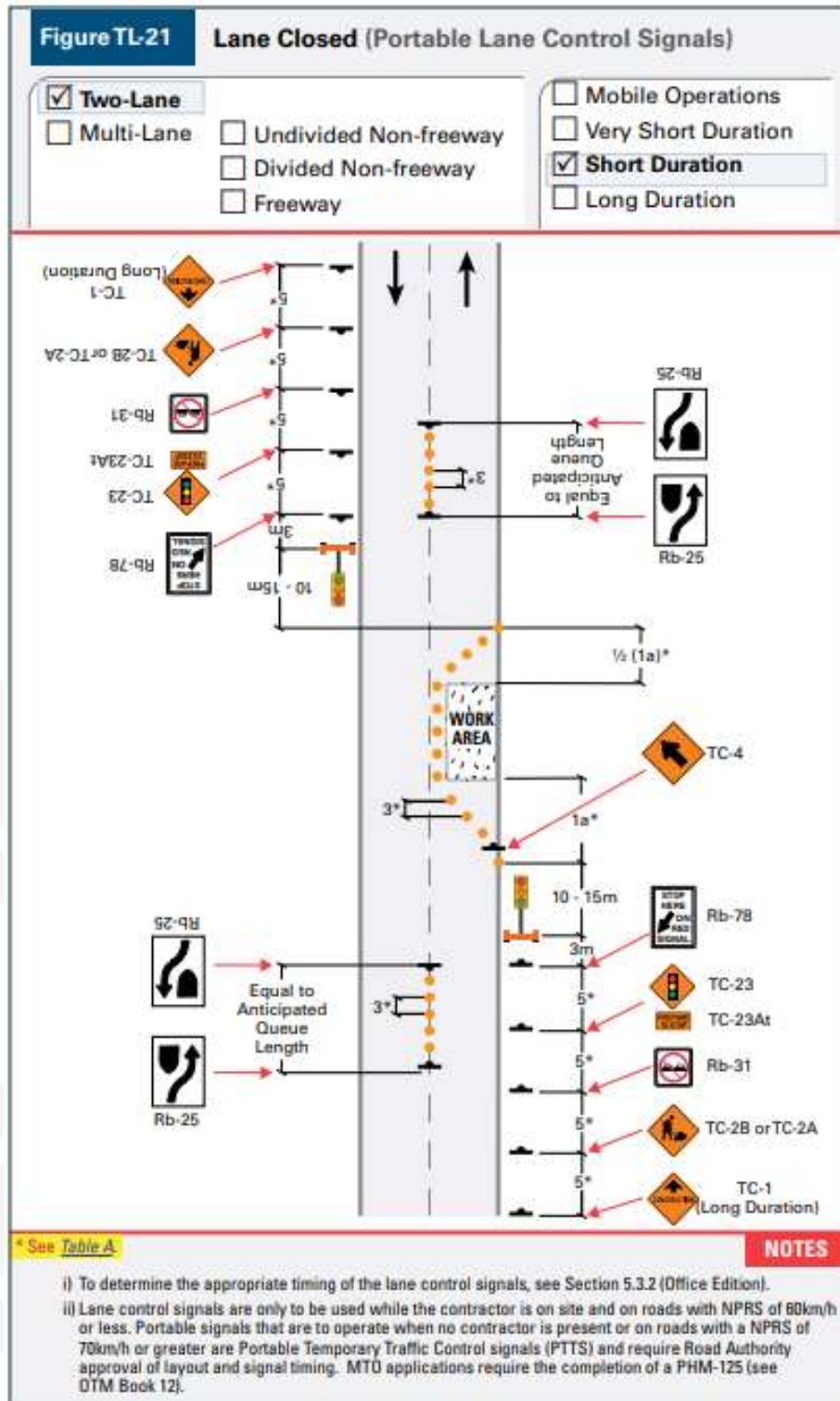
- Temporary warning signs and devices are in place.
- Ensuring the safe passage of traffic always.
- Sign placement where needed.
- Access ways to be kept clear for emergency vehicles and over-dimensional vehicles at specific work.
- Ensuring that control measures are maintained, and that work-in-progress is inspected.
- Provide advance notice to other road users through signage and flagging.

## 4.0 Incident Management

In the event of a traffic incident such as a collision in the work zone, the contractor shall:

- Respond quickly with emergency traffic control measures to ensure public and field crew safety once an incident has been identified.
- Contact the appropriate emergency response agencies.
- Make use of available devices and equipment to ensure prompt access for emergency vehicles.
- If necessary, stop work operations and clear the work zone to enable emergency response vehicles to travel through the work zone unimpeded.
- Restore normal traffic operations by modifying work plans and activities, where necessary; and
- Review and analyze any incidents and undertake preventative actions to prevent reoccurrence.

## Appendix 1 – Traffic Control Plan





Appendix 2 – Traffic Control Drawings & Detours

