

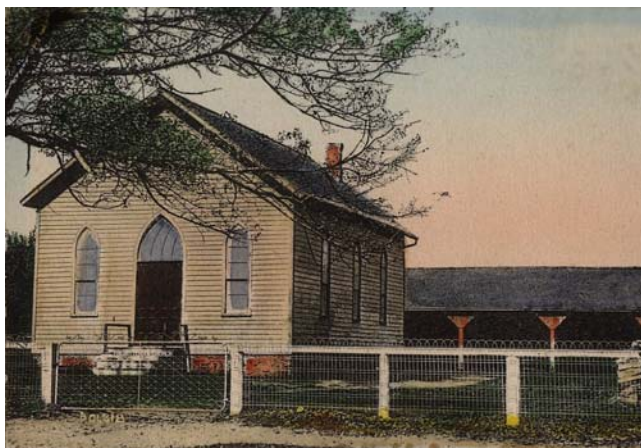
# St. Matthew Presbyterian Church

---

Location: Ethel, Ontario

Year built: 1875

CHURCH TRUSTEES BOUGHT land for a church in 1870 for \$37.50. Until the church was built, services were held in homes and the school. The church was built in 1875 for \$700. It had benches in the northeast corner facing west where the choir sat, and a stove in the southwest corner. Joint services were held with the Methodist congregation until they were able to build their church in 1877. The Ethel church was a two-point charge with Cranbrook served by Rev. McRae.



The first Presbyterian Church as seen in an early colour postcard. This structure was used as the main body of the renovated church seen in the photograph below.



A precentor directed the music until an organ was installed in 1912 and an organist was hired. The church had 104 members in 1921.

Extensive renovations were carried out in 1927. The original building was maintained, but it was given a brick coat veneer and a tower-like front entrance was added. The church was raised and a basement was added. A choir loft was added to the north end, steps and a gallery to the south. Stained glass windows were installed. All the work was completed for \$5300.

The church remained a two-point charge until 1965, when it was associated with Atwood church. Mennonites began using the church in the 1960s for their services. Joint services were begun with Ethel United Church in 1981.

---